

erbe
power your performance.



VIO[®] 3

plug and operate

Our promise when it comes to technology:
High-tech and safety
are our passion.



We have been a pioneer in the development of electrosurgery for over 90 years, gathering experience you can count on.

Multiprocessor technology

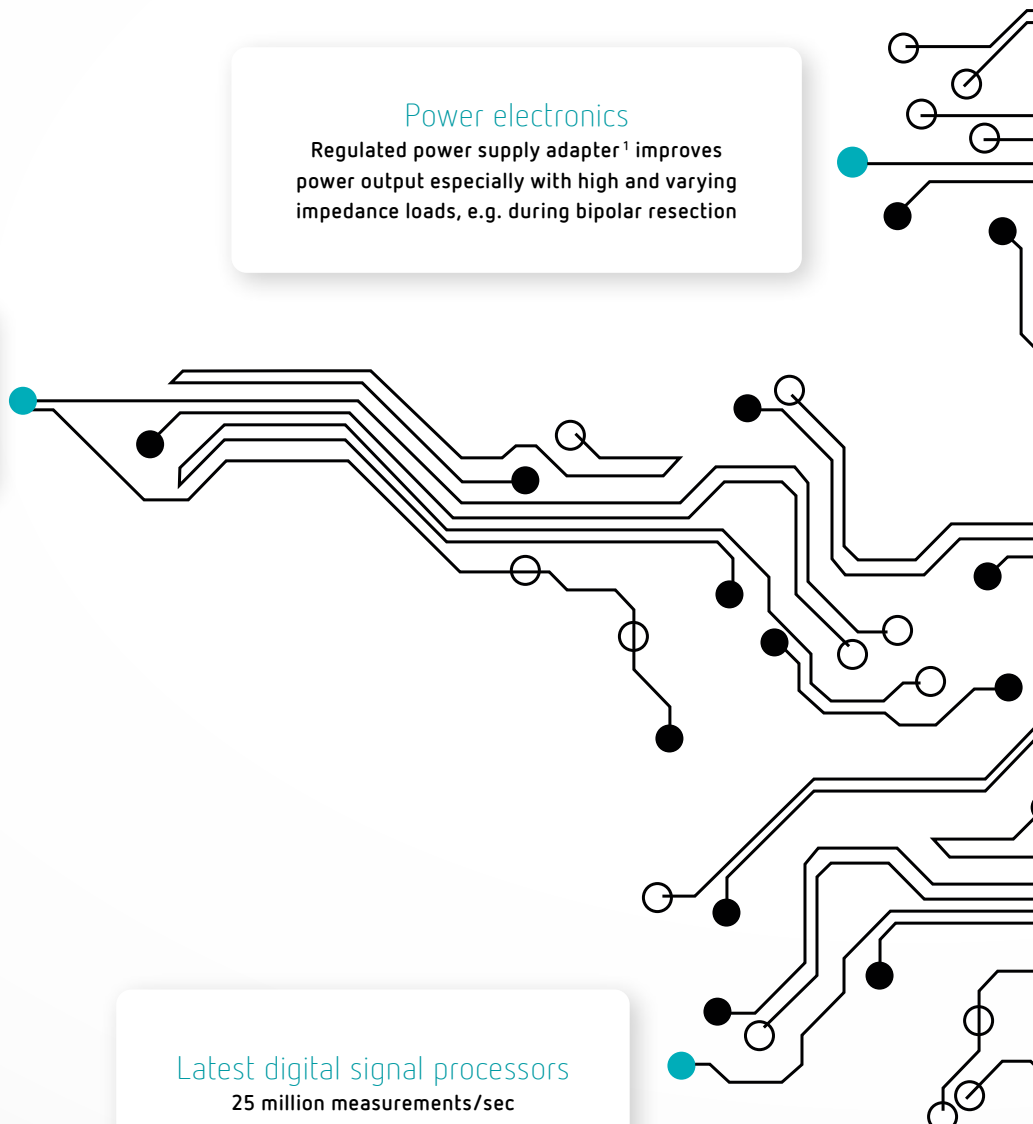
15 processors facilitates
superior system performance

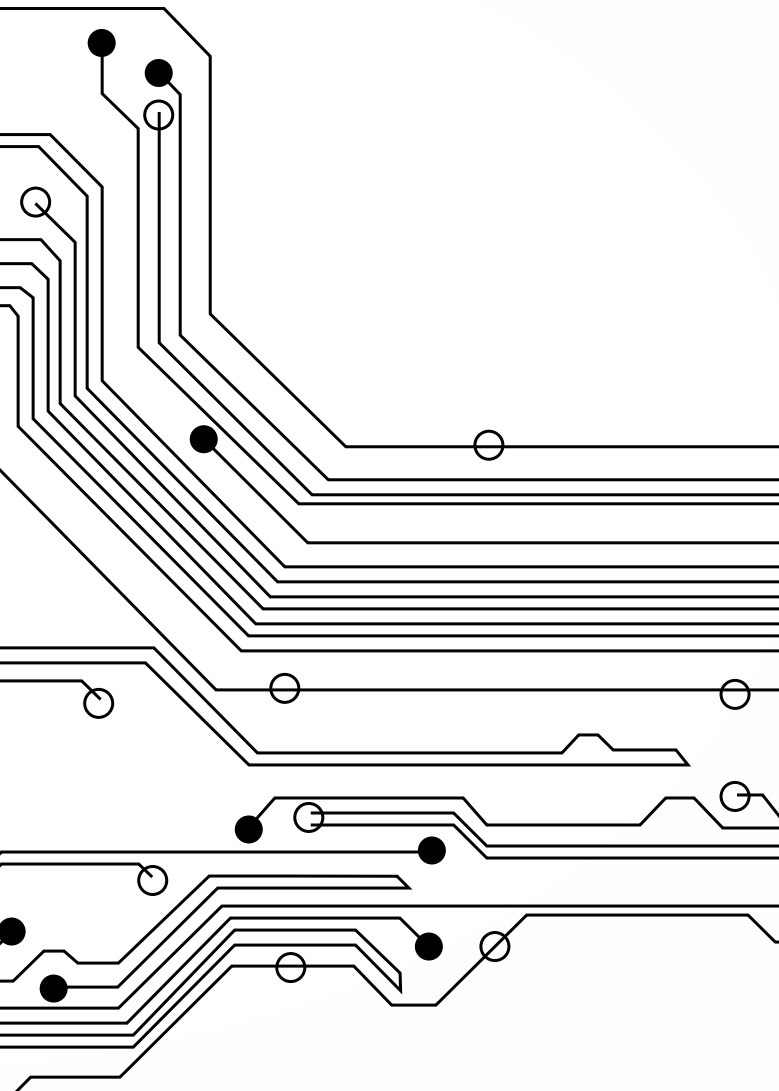
Power electronics

Regulated power supply adapter¹ improves
power output especially with high and varying
impedance loads, e.g. during bipolar resection

Latest digital signal processors

25 million measurements/sec
improves reproducibility of the tissue effect²





The WiFi communication interface

The basis for wireless communication,
e.g. for future OR integration

We have shaped electro-surgery, developing it into today's leading-edge operating room technology. This has made us an essential and reliable partner for many users. VIO[®] 3 is yet another of our milestones in technology, following the ICC unit series and VIO[®] 300/200. Utilize the innovative advantages the VIO[®] 3 has to offer.

WHY ERBE?

- ✔ Experts in electrosurgery for over 90 years
- ✔ Highest priority of our products: safety
- ✔ We set benchmarks and drive innovative developments
- ✔ Global sharing of experience and knowledge transfer
- ✔ Presence and support worldwide
- ✔ Internationally trusted partner

With its logical and intuitive interface, the VIO® 3 is designed to ensure optimal user-friendliness³. The size of the touchscreen display alone speaks for itself: from the operating field, the surgeon always has a clear view of all control elements. As your stepGUIDE, VIO® 3 provides guidance by suggesting experienced starting settings used in various clinical applications. This results in less setting adjustment or modifications.

**Plug and operate.
It couldn't be easier.**



90 % of all users feel VIO® 3
is easier to use⁴

VIO® 3

**LARGE
TOUCHSCREEN
DISPLAY**

**GUIDED ERROR
ANALYSIS, DIGITAL
INSTRUCTIONS
FOR USE**

**FOCUSVIEW:
ACTIVE INSTRUMENTS
ARE SHOWN
ON THE DISPLAY**



plug and operate

RAPID ACCESS
TO THE REQUIRED
PROGRAM

EASY MODE
ADJUSTMENT
VIA EFFECT
SETTINGS

INCREDIBLY
SIMPLE, GUIDED
OPERATION USING
"stepGUIDE"



MULTILINGUAL
INTERFACE

REMODE® FUNCTION:
SELECTION OF UP
TO 6 SUB-PROGRAMS
DIRECTLY FROM THE
OPERATING FIELD

PROGRAM-
SPECIFIC SETTING,
ALSO FOR STANDARD
INSTRUMENTS

Multi-modality modes for various clinical specialities

VIO®3 has the right mode for your application, supporting monopolar and bipolar techniques and our proprietary hybrid technology – a combination of different technology.

It has never been easier to achieve the desired mode-specific tissue effect using just one setting – the effect setting.

The effects can be selected in extremely fine increments using just one adjustment control. The change in effect is shown on the display.



19 OPTIMIZED MODES

The right modes for your application adapted to your instrument selection

PRECISE EFFECT SETTINGS

Adjusting the selected mode has never been easier via the effect setting

HIGH REPRODUCIBILITY

Advanced measurement technology
Consistent cutting and coagulation effects

HOMOGENOUS TISSUE EFFECTS

VIO®3 responds to parameter changes in the tissue immediately
Regardless of the electrode shape or incision technique

The new VIO® 3 modes

preciseSECT

Low-smoke exposure



Dynamic adjustment of the modulation frequency makes this new mode ideally suited for exposing structures. preciseSECT facilitates rapid and effective coagulation with limited tissue-separating properties, in combination with less development of smoke and carbonization⁴.

Disciplines: General / visceral surgery, gynecology, urology

thermoSEAL®

Rapid vessel sealing



With the new AUTO START, thermoSEAL® is twice as fast as the BiClamp® mode⁵. And this mode permanently measures the tissue parameters while sparing lateral tissue. This makes thermoSEAL® ideal for sealing tissue bundles and vessels as well as for coagulating bleedings extremely efficiently.

Disciplines: General / visceral surgery, gynecology, urology

highCUT bipolar

Bipolar resection



This new mode has been optimized for bipolar resection in a saline solution. The power peak system (PPS) enables rapid incision. The stable plasma facilitates rapid cutting¹.

Instruments: Bipolar resectoscopes

softCOAG®

Accelerated coagulation



Now with QuickStart¹: in the case of bipolar and monopolar softCOAG®, a short pulse of energy on contact with tissue results in accelerated coagulation.

Application: Coagulation for laparoscopic procedures



92% of all users
feel preciseSECT is better⁴

Overview of modes



Our modes are regulated to a constant voltage level continually adapting output power to changing parameters to achieve reproducible tissue effects. Fine adjustment has never been easier, simply by selecting an effect. You can choose from 19 finely-adjustable CUT and COAG modes:

autoCUT

Smooth incisions,
minimum to moderate hemostasis

highCUT

Smooth incisions, minimum to moderate hemostasis. For tissue with poor conductive properties and monopolar resection using non-conductive irrigation liquids

dryCUT®

Controlled incision
with significant hemostasis

autoCUT bipolar

Smooth incisions,
minimum to moderate hemostasis,
e.g. for BiSect laparoscopic scissors

highCUT bipolar

Smooth incisions,
minimum to moderate hemostasis.
For bipolar resection in a saline solution

endoCUT® Q

Fractionated cutting mode
with cutting and coagulation intervals,
e.g. for polypectomy snare

endoCUT® I

Fractionated cutting mode
with cutting and coagulation intervals,
e.g. for sphincterotome

CUT

preciseSECT

Optimized exposure as a result of dynamically adapting modulation.
Medium coagulation

swiftCOAG®

Intensive coagulation, enhanced with slight tissue-separating properties

softCOAG®

Slow, deep coagulation with no tissue carbonization⁶, e.g. for use with ball electrode for tissue devitalization or with monopolar scissors

forcedCOAG®

Effective and fast "standard" coagulation with moderate to intense hemostasis

sprayCOAG®

Non-contact, efficient surface coagulation with low penetration⁶

twinCOAG®

Consistent tissue effects, even when two monopolar instruments are activated at the same time with just one unit

softCOAG® bipolar

Slow, deep coagulation with no tissue carbonization⁶, e.g. for use with bipolar coagulation instruments and bipolar resectoscopes

forcedCOAG® bipolar

Fast bipolar coagulation with moderate to intense hemostasis

thermoSEAL®

Special COAG mode for sealing highly-vascularized tissue bundles and blood vessels with a diameter of up to 7 mm using appropriate Erbe instruments⁵

forcedAPC

Fast "standard" argon plasma coagulation, e.g. for hemostasis of diffuse bleeding, ablation and tissue reduction

pulsedAPC®

Argon plasma coagulation with reduced application of energy as a result of pulses, e.g. flexible APC probes

preciseAPC®

Fine argon plasma coagulation, largely independent of the distance to the target tissue. e.g. for flexible APC probes, where tissue thickness is a concern

Expanded choice in instrument selection



You can plug standard instruments into any universal socket reducing risk of confusion. Use up to 6 instruments of your choice (including APC) in accordance with your procedure. The connection options offered by VIO® 3 support a larger number instrument combination. Each socket supports the AUTO START function for bipolar instruments.

EXPANDED INSTRUMENT SELECTION



4 monopolar, 4 bipolar, 4 plug & play instruments (e.g. BiClamp®) or any combination thereof.

RECOMMENDED CONNECTION



Based on pre-programmed settings the stepGUIDE supports you in selecting a socket for your chosen instrument.

UNIVERSAL SOCKET¹



Standard instruments can be inserted into any universal socket.

SLOT ASSIGNMENT



The active slot and the instrument in use are shown on the display and through the illuminated socket frame.

CONNECTION OPTIONS



When using APC 3, you can extend your options and insert up to 6 instruments of your choice.

EASY SOCKET EXCHANGE¹



Sockets can easily be replaced without opening the casing.

CONNECTION
OPTIONS



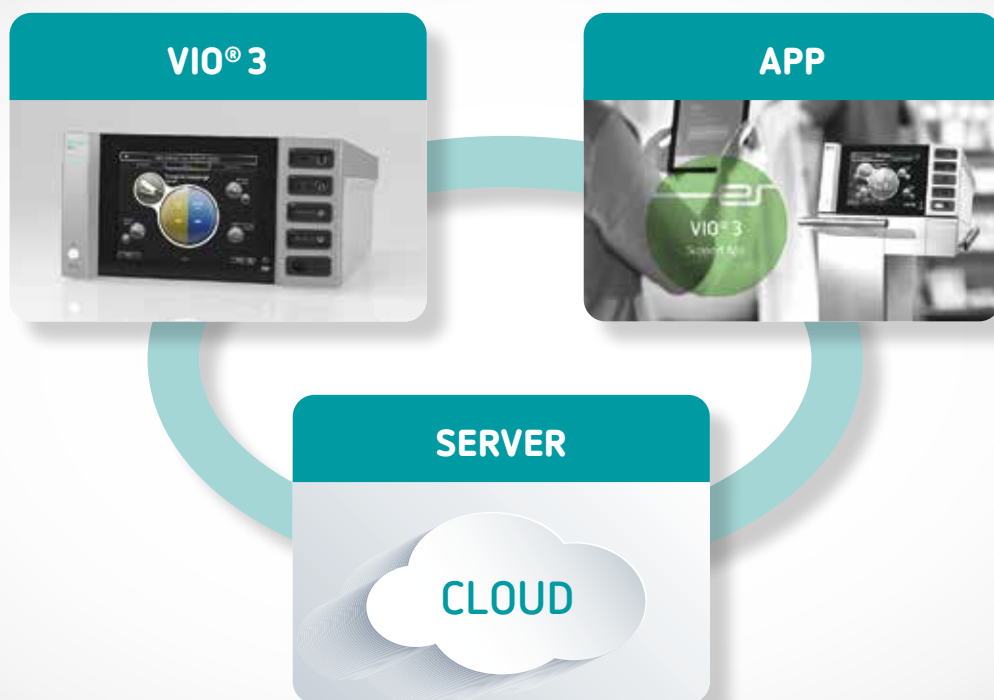
EASY SOCKET
EXCHANGE



Your direct link – the Erbe support app



With the support app, you can generate and update user programs using templates and archive these on our server. Our staff and distributors can update and upgrade your VIO®3 on site using VIO® WiFi (PC or tablet).



Using our support app, you can expand the performance spectrum of the VIO®3. You can procure it from the app Store. It will be cleared for use after successful registration on our website.

With our support app you can also use your personal programs on other in-house VIO®3 systems or externally, for example for live surgeries and workshops. This gives you access to your own personal setting configurations anywhere, anytime.



*96 % of all users
would recommend VIO® 3⁴*

BENEFITS FOR YOU:

WHY VIO® 3?

- ✔ Reliably reproducible tissue effects thanks to state-of-the-art processor technology
- ✔ Fine-tuning of tissue effects using our improved effect setting is easy and more precise
- ✔ Multi-modality modes for various applications
- ✔ Multi-disciplinary ESU
- ✔ User-friendly with logical, convenient and visual user navigation (stepGUIDE)
- ✔ Selection of up to 6 different settings for your procedure from the operating field
- ✔ Use of up to 6 instruments of your choice
- ✔ Supports proprietary Erbe hybrid technology
- ✔ Upgrade compatibility with software, hardware and workstation modules

Technical data

Power connection

| | |
|------------------------------------|--|
| Rated supply voltage | 100–120 VAC ($\pm 10\%$) 220–240 VAC ($\pm 10\%$) |
| Rated supply frequency | 50/60 Hz |
| Line current (averaged) | Max. 6.3 A |
| Power consumption in standby mode | < 30 watts |
| Power consumption at max. HF power | 550 watts |
| Max. pulse power consumption | 1,600 watts |
| Potential equalization connection | Yes |
| Power fuse | T 6.3 A H / 250 VAC |

Power output

| | |
|---------------------|----------------------|
| Maximum CUT output | 400 watts at 300 ohm |
| Maximum COAG output | up to 360 watts |

Type of operation

| | |
|------------------------|-----------------|
| Intermittent operation | 25 % duty cycle |
|------------------------|-----------------|

Dimensions and weight

| | |
|------------------------|--------------------|
| Width x height x depth | 415 x 215 x 375 mm |
| Weight | 12 kg |
| Display size | 10.4 inches |

Ambient conditions for transport and storage of the unit

| | |
|-------------------|------------------|
| Temperature | -30 °C to +70 °C |
| Relative humidity | 10 %–90 % |

Ambient conditions for operating the unit

| | |
|-------------------|---------------------------|
| Temperature | +10 °C to +40 °C |
| Relative humidity | 15 %–80 %, non-condensing |

Standards

| | |
|--|------|
| Classification in accordance with EU directive 93/42/EEC | II b |
| Protection class in accordance with EN 60 601-1 | I |
| Type in accordance with EN 60 601-1 | CF |

Programs

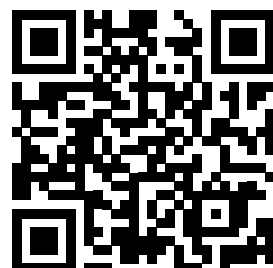
| | |
|------------------------|--|
| Program groups | 20; program storage capacity per group: 15 |
| Programs/applications | Up to 300 |
| ReMode levels/settings | Up to 1800 |



vio.erbe-med.com

References/publications/documents:

- 1 Current patents: <https://www.erbe-med.com/ip>
- 2 Technical specification of measurement and control module
- 3 Design registered
- 4 Based on a protocol of a user acceptance test (12/2014, 06/2016)
- 5 B. Nold et. al.: thermoSEAL® bench test VIO® 3 Y4
- 6 Various publications (e. g. Arima 2009, Sakuragi, T. 2008 und 2009, Repici 2012, Neugebauer, A. 2012)



Important information

We have prepared this document with care. Nonetheless, we cannot completely rule out errors in this document.

The information, recommendations and other data ("Information") contained in this document reflect our state of knowledge and the state of science and technology at the time of preparing the document. The information is of a general nature, non-binding and serves solely for general information purposes and does not represent instructions for use or notes on application.

The information and recommendations contained in this document do not constitute any legal obligations by Erbe Elektromedizin GmbH as well as their associated companies ("Erbe") or any other claims against Erbe. The information does not represent a guarantee or other quality statement, these require the express contractual arrangement with Erbe in individual cases.

Erbe shall not be liable for any type of damage resulting from following information given in this document, regardless of the legal reason for liability.

Every user of an Erbe product is responsible for checking the respective Erbe product for its properties as well as the suitability for the intended type of application or intended purpose in advance. The suitable type of application of the respective Erbe product is given by the user manual and the notes on use for the corresponding Erbe product. The user is obliged to check whether the existing user manual and the notes on use correspond with the status for the specific Erbe product. The devices may only be used according to the user manual and the notes on use.

The information on setting values, application sites, duration of application and the use of the respective Erbe product is based on the clinical experience of physicians independent from Erbe. They represent guidelines which need to be checked by the user for their suitability for the actual planned application. Depending on the circumstances of an actual application case, it may be necessary to deviate from the information provided. The user has to check this on his/her own responsibility in each case when using an Erbe product. We wish to point out that science and technology is constantly subject to new developments arising from research and clinical experience. For this reason it may be necessary for the user to deviate from the information provided in this document.

This document contains information about Erbe products which may possibly not be approved in a specific country. The user of the respective Erbe product is obliged to inform him/herself whether the Erbe product he/she is using is legally approved in his/her country and/or if legal requirements or restrictions for use possibly exist and to which extent.

This document is not intended for users in the USA.

Erbe Elektromedizin GmbH
Waldhoernlestrasse 17
72072 Tuebingen
Germany

Phone +49 7071 755-0
Fax +49 7071 755-179
info@erbe-med.com
erbe-med.com