

OLYMPUS[®]

Your Vision, Our Future

Optera

COLONOVideoscope

CF-H170L/I

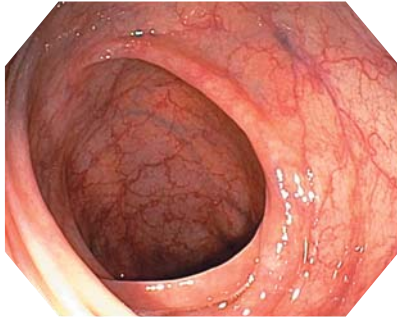
A powerful tool for routine colonoscopy – with HDTV image quality and improved insertability



Main Features

HDTV Image Quality

HDTV captures and displays clear images with precise details and accurate colors, helping you to perform more advanced procedures.



NBI (Narrow Band Imaging)

NBI facilitates observation of capillaries and other structures on the mucosal surface. It helps identify suspicious areas.



Close Focus

Close focus enables you to obtain an enlarged, close-up image by moving the scope tip as close as 2 mm from the mucosa.

Variable Stiffness

Variable stiffness helps to avoid re-loop of the endoscope, for example at the sigmoid colon, and also allows the stiffness of the scope to be adjusted on a case-by-case basis in order to meet the unique anatomical needs of each patient or the handling preferences of the physician.

Water Jet

This technology removes mucus and debris inside the colon at the press of a button on the scope or the footswitch unit, providing a clear view.

Waterproof Connector

The newly designed connector is fully submersible and therefore eliminates the need for a water-resistant cap, while minimizing the risk of damage due to accidental immersion.



Specifications

Optical System	Field of view	140°
	Direction of view	Forward viewing
	Depth of field	2-100 mm
Insertion Section	Distal end outer diameter	12.8 mm
	Distal end enlarged	
	Insertion tube outer diameter	12.8 mm
	Working length	L : 1680 mm I : 1330 mm

Instrument Channel	Channel inner diameter	3.7 mm
	Minimum visible distance	5.0 mm from the distal end
High-frequency	Direction from which endotherapy accessories enter and exit the endoscopic image	
	Cauterization treatment	Available
Bending Section	Angulation range	Up 180°
		Down 180°
		Right 160°
		Left 160°
Total Length	L : 2005 mm I : 1655 mm	

Specifications, design and accessories are subject to change without any notice or obligation on the part of the manufacturer.