

GASTROINTESTINAL VIDEOSCOPE

GIF-XP170N

5.4 mm ultra-slim endoscope achieves both great insertability and high image quality at the same time



Main Features

Ultra-slim Design

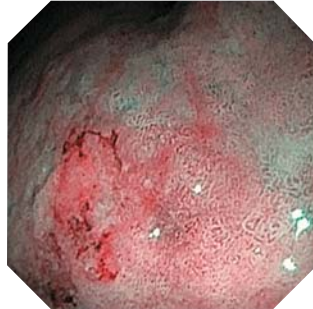
A marvel of compact design, the 5.4 mm outer diameter of the distal tip improves insertability, resulting in reduced patient discomfort and enhanced operator comfort.

Advanced Image Clarity

Two light guides provide amplified brightness to support accurate depiction of mucosal structures.



White Light



NBI

Wide View Angle

The field of view has been increased to 140 degrees, now delivering the same field of view as routine upper GI scopes.

Advanced Suction Capability

The larger 2.2 mm instrument channel enables the use of a wide range of endotherapy accessories and increases suction capability.

Waterproof Connector

The newly designed connector is fully submersible and therefore eliminates the need for a water-resistant cap, while minimizing the risk of damage due to accidental immersion.



Specifications

Optical System	Field of view	140°
	Direction of view	Forward viewing
	Depth of field	3-100 mm
Insertion Section	Distal end outer diameter	5.4 mm
	Distal end enlarged	
	Insertion tube outer diameter	5.8 mm
	Working length	1100 mm

Instrument Channel	Channel inner diameter	2.2 mm
	Minimum visible distance	2.0 mm from the distal end
High-frequency	Cauterization treatment	Available
		Up 210°
Bending Section	Angulation range	Down 90°
		Right 100°
		Left 100°
Total Length	1420 mm	

Specifications, design and accessories are subject to change without any notice or obligation on the part of the manufacturer.